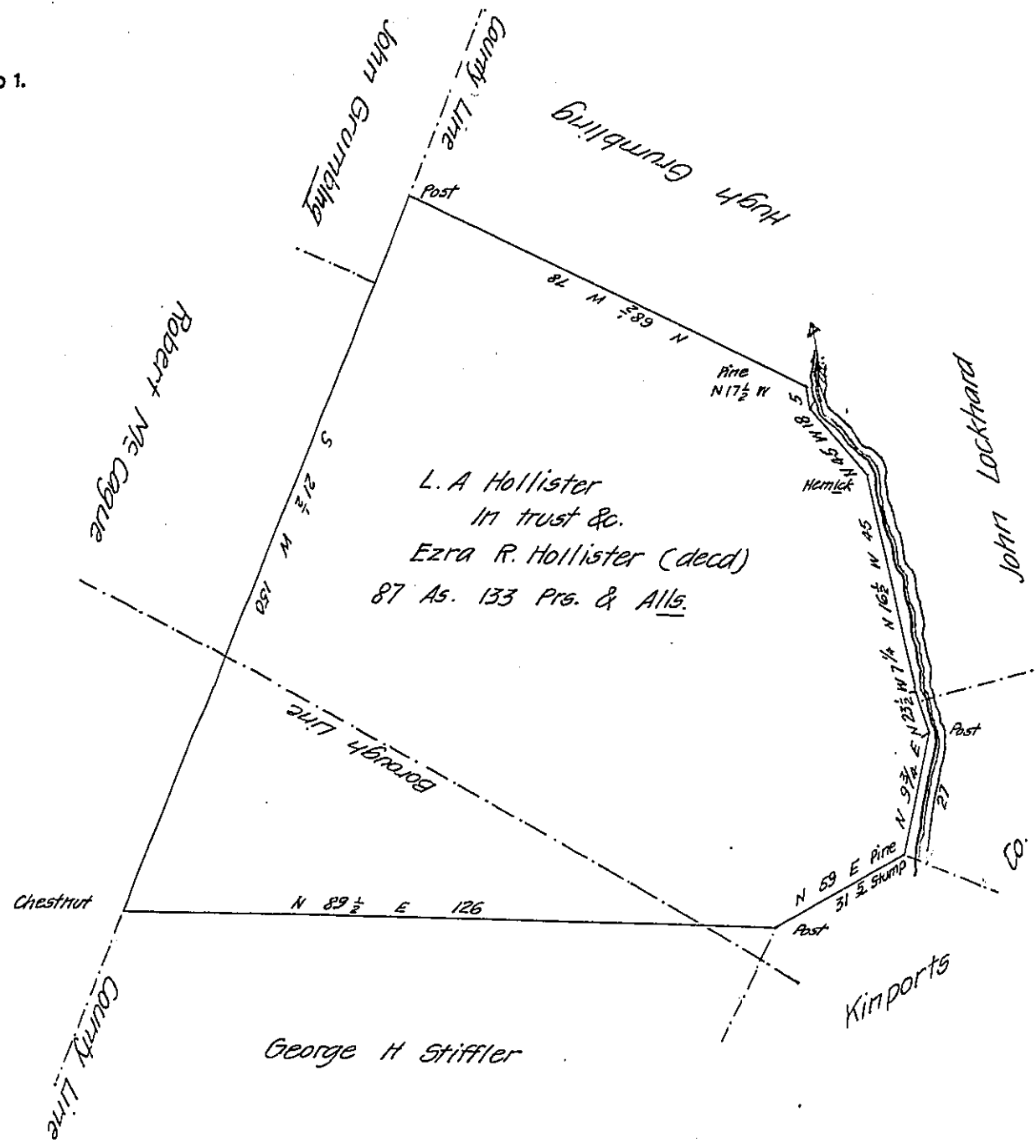


FORM NO 1.



Draft of a tract of land containing eighty seven acres and one hundred and thirty three perches and allowance of Six per Cent for roads &c. Situated in Cherry Tree Borough Indiana County and Susquehanna Township Cambria County Surveyed 28th March A.D. 1873 in pursuance of a Warrant granted to L. A. Hollister for himself and in trust for the legal representatives and heirs of Ezra R. Hollister (decd) dated March 21st 1873

Henry Scanlan —

To R. B. Beath Esquire

E. Paige County Surveyor

Surveyor General Pa.

for Indiana County

IN TESTIMONY that the above is a copy of the original remaining on file in the Department of Internal Affairs of Pennsylvania, made conformably to an Act of Assembly approved the 16th day of February, 1833, I have hereunto set my Hand and caused the Seal of said Department to be affixed at Harrisburg, this twenty second day of January 1908

Henry Houch
Secretary of Internal Affairs.